

## Canzona Prima

Floriano Canale (c.1550-c.1603)

*Canzoni da Sonare* (1600)

Canto (part 1 of 4)

1

5

10

15

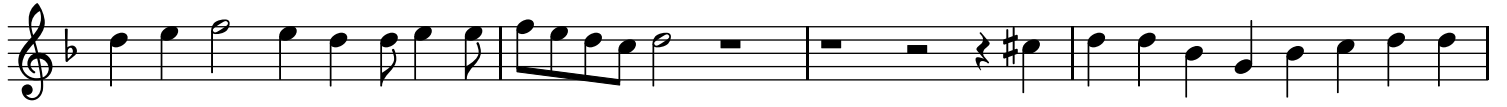
20

25

30

35

40



## La Avogadra

Floriano Canale (c.1550-c.1603)

*Canzoni da Sonare* (1600)

Alto (part 2 of 4)

5

10

15

20

25

30

35

40

45

1



## La Avogadra

Floriano Canale (c.1550-c.1603)

*Canzoni da Sonare* (1600)

Alto (part 2 of 4)

5

10

15

20

25

30

35

40

45

La Avogadra (alto)



## La Avogadra

Floriano Canale (c.1550-c.1603)

*Canzoni da Sonare* (1600)

Tenore (part 3 of 4)

1

5

10

15

20

25

30

35

40

Musical score for 'La Avogadra (tenore)' in G major (one flat) and 4/4 time. The score consists of three staves of music. The first staff begins with a treble clef, a key signature of one flat, and a common time signature. It contains measures 1 through 45, with the number '45' written above the final measure. The second staff continues the melody from measure 45. The third staff begins with measure 50, with the number '50' written above the first measure, and concludes with a double bar line. The music features a mix of quarter, eighth, and sixteenth notes, with some rests and a key signature change to two sharps in the final measure.



## La Avogadra

Floriano Canale (c.1550-c.1603)

*Canzoni da Sonare* (1600)

Tenore (part 3 of 4)

1

5

10

15

20

25

30

35

40

45

50

## La Avogadra

Floriano Canale (c.1550-c.1603)

*Canzoni da Sonare* (1600)

Basso (part 4 of 4)

5

10

15

1

20

25

30

35

40

45

50

The image shows a musical score for the piece 'La Avogadra (basso)'. It consists of two staves of music in bass clef. The first staff begins at measure 45 and contains five measures of music. The second staff begins at measure 50 and contains five measures of music, ending with a double bar line. The music is written in a single line on a five-line staff with a bass clef and a key signature of one flat (Bb). The notation includes various note values, rests, and articulation marks.