

# In nomine à 6

Weidner #3

fol. 20<sup>v</sup> - 21<sup>r</sup>

Christopher Tye (c.1505-c.1573)

Treble I (part 1 of 6)

British Library Add. MS 31390 (c.1578)

4 5 1

10 15 20 25 30 35 40 45 50

# In nomine à 6

Weidner #3

fol. 20<sup>v</sup> - 21<sup>r</sup>

Christopher Tye (c.1505-c.1573)

Treble I (part 2 of 6)

British Library Add. MS 31390 (c.1578)

Musical score for Treble I (part 2 of 6) of 'In nomine à 6' by Christopher Tye. The score is in 4/4 time, G minor, and consists of eight staves of music. Measure numbers 4, 5, 2, 10, 15, 20, 25, 30, 35, 40, 45, and 50 are indicated above the staves. The piece concludes with a double bar line and repeat signs.

# In nomine à 6

Weidner #3

fol. 20<sup>v</sup> - 21<sup>r</sup>

Christopher Tye (c.1505-c.1573)

Alto I (part 3 of 6)

British Library Add. MS 31390 (c.1578)

5

10

15

20

25

30

35

40

45

50

# In nomine à 6

Weidner #3

fol. 20<sup>v</sup> - 21<sup>r</sup>

Christopher Tye (c.1505-c.1573)

Alto I (part 3 of 6)

British Library Add. MS 31390 (c.1578)

5

10

15

20

25

30

35

40

45

50

# In nomine à 6

Weidner #3

fol. 20<sup>v</sup> - 21<sup>r</sup>

Christopher Tye (c.1505-c.1573)

Alto II (part 4 of 6)

British Library Add. MS 31390 (c.1578)

3 5 10 15 20 25 30 35 40 45 50

# In nomine à 6

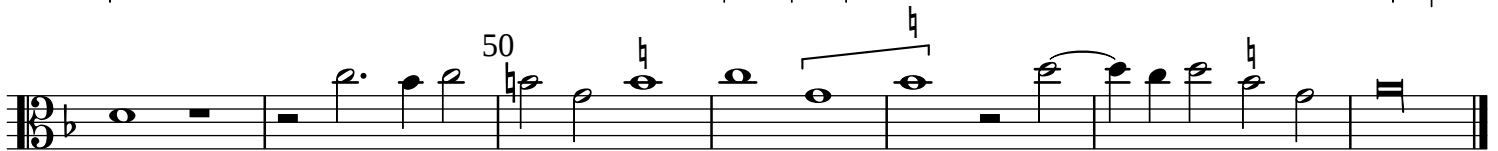
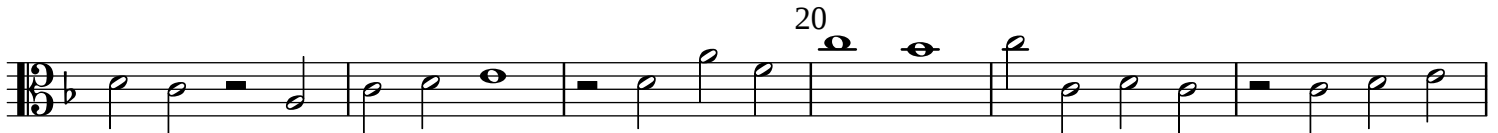
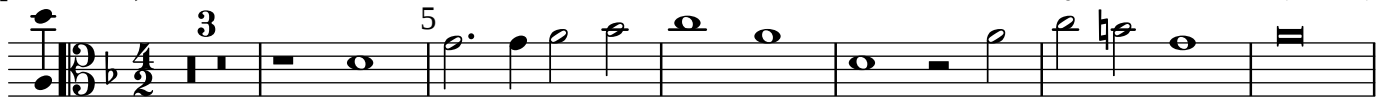
Weidner #3

fol. 20<sup>v</sup> - 21<sup>r</sup>

Christopher Tye (c.1505-c.1573)

Alto II (part 4 of 6)

British Library Add. MS 31390 (c.1578)



# In nomine à 6

Weidner #3

fol. 20<sup>v</sup> - 21<sup>r</sup>

Christopher Tye (c.1505-c.1573)

Bass I (part 5 of 6)

British Library Add. MS 31390 (c.1578)

1 5 10 15 20 25 30 35 40 45 50

# In nomine à 6

Weidner #3

fol. 20<sup>v</sup> - 21<sup>r</sup>

Christopher Tye (c.1505-c.1573)

Bass II (part 6 of 6)

British Library Add. MS 31390 (c.1578)

2

5

10

15

20

25

30

35

40

45

50