

Francesco Bendusi

Opera nova de balli

à quattro

Edited by Allen Garvin

Bassus

Hawthorne Early Music

FB-1

20130704

©2013 — Allen Garvin
Some rights reserved

Hawthorne Early Music Publications, Dallas, TX

This work is licensed under the Creative Commons Attribution-ShareAlike 3.0 US License. To view a copy of this license, visit <http://creativecommons.org/licenses/by-sa/3.0/us> or send a letter to Creative Commons, 444 Castro Street, Suite 900, Mountain View, California, 94041, USA.

The typeface used is Liberation Serif, licensed under the GNU General Public License. This document was typeset using XeLaTeX and Lilypond.

10 09 08 07 06 05 04 03 02 01 19 18 17 16 15 14 13

Pass'e mezo ditto il romano

Musical notation for the piece "Pass'e mezo ditto il romano". It consists of two staves of music in bass clef with a common time signature. The first staff contains measures 1 through 5, with a "5" above the fifth measure. The second staff contains measures 6 through 15, with "10" above the tenth measure and "15" above the fifteenth measure. The piece concludes with a double bar line.

Moschetta

Musical notation for the piece "Moschetta". It consists of four staves of music in bass clef with a common time signature. The first staff contains measures 1 through 5, with a "5" above the fifth measure. The second staff contains measures 6 through 10, with a "10" above the tenth measure. The third staff contains measures 11 through 15, with a "15" above the fifteenth measure and a flat symbol (b) above the twelfth and fourteenth measures. The fourth staff contains measures 16 through 20, with a "20" above the twentieth measure and a "6/2" above the sixteenth measure. The piece concludes with a double bar line.

Desiderata

Musical notation for the piece "Desiderata". It consists of three staves of music in bass clef with a common time signature. The first staff contains measures 1 through 5, with a "5" above the fifth measure. The second staff contains measures 6 through 10, with a "10" above the tenth measure. The third staff contains measures 11 through 15, with a "15" above the fifteenth measure and a "6/2" above the sixteenth measure. The piece concludes with a double bar line.

Pietoso

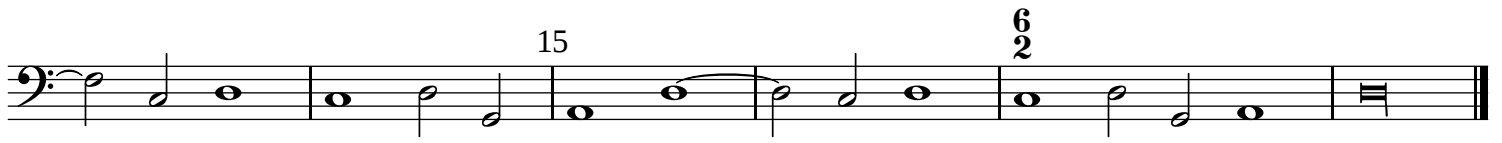
Musical score for 'Pietoso' in bass clef, common time. The score consists of three staves. The first staff begins with a treble clef and a bass clef, followed by a series of notes. A measure rest of 5 is indicated above the staff. The second staff continues the melody with a measure rest of 10. The third staff concludes the piece with a measure rest of 15 and a final cadence marked with a double bar line and repeat dots. A 6/2 time signature is shown above the final measure.

Speranza

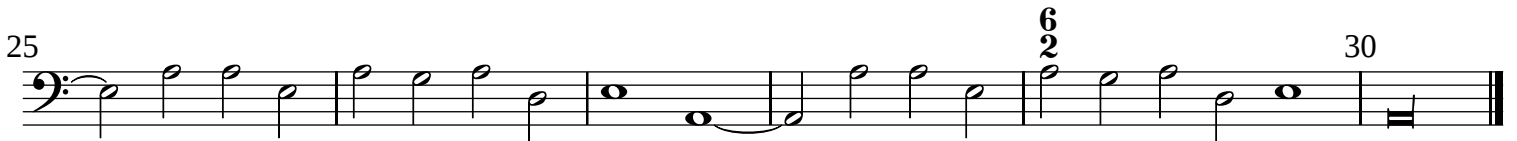
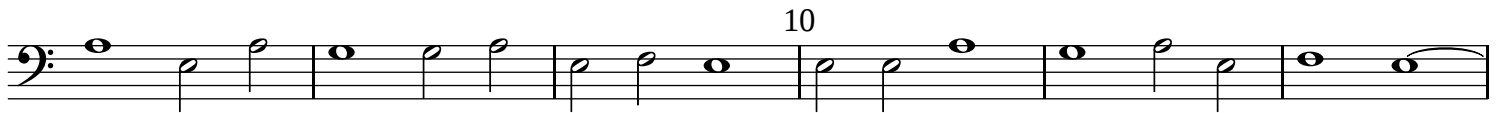
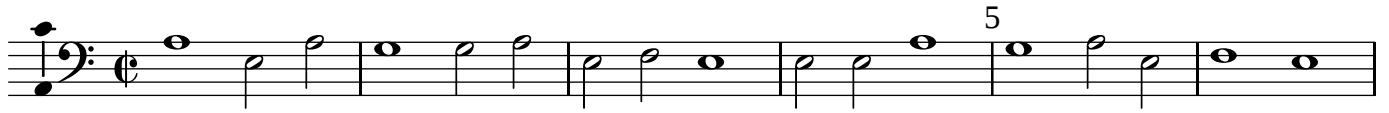
Musical score for 'Speranza' in bass clef, common time. The score consists of four staves. The first staff begins with a treble clef and a bass clef, followed by a series of notes. A measure rest of 5 is indicated above the staff. The second staff continues the melody with a measure rest of 10. The third staff continues with a measure rest of 15. The fourth staff concludes the piece with a measure rest of 20 and a final cadence marked with a double bar line and repeat dots. A 6/2 time signature is shown above the final measure.

La mala vecchie

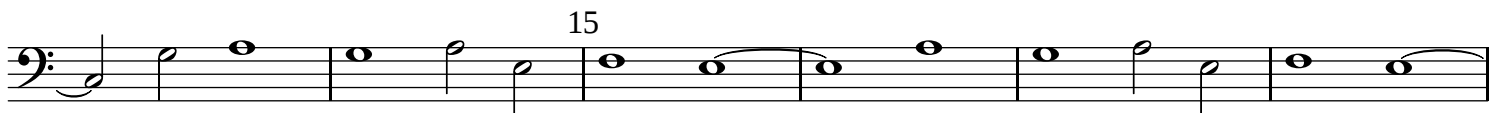
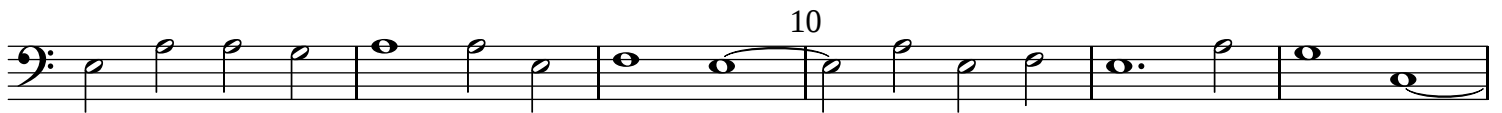
Musical score for 'La mala vecchie' in bass clef, common time. The score consists of two staves. The first staff begins with a treble clef and a bass clef, followed by a series of notes. A measure rest of 5 is indicated above the staff. The second staff continues the melody with a measure rest of 10 and concludes with a final cadence marked with a double bar line and repeat dots.



Il stocco



Doi stanchi



La falilela

Musical score for 'La falilela' in bass clef, 4/4 time. The score consists of three staves. The first staff contains measures 1-5, with a '5' above the fifth measure. The second staff contains measures 6-10, with a '10' above the tenth measure. The third staff contains measures 11-15, with a '15' above the thirteenth measure, a '6/2' above the fourteenth measure, and a 'b' below the thirteenth measure. The piece ends with a double bar line.

La bruna

Musical score for 'La bruna' in bass clef, 4/4 time. The score consists of two staves. The first staff contains measures 1-5, with a '5' above the fifth measure. The second staff contains measures 6-15, with a '10' above the tenth measure, a '6/2' above the thirteenth measure, and a '15' above the fifteenth measure. The piece ends with a double bar line.

E dove vastu o bon solda

Musical score for 'E dove vastu o bon solda' in bass clef, 4/4 time. The score consists of three staves. The first staff contains measures 1-5, with a '5' above the fifth measure. The second staff contains measures 6-10, with a '10' above the tenth measure. The third staff contains measures 11-15, with a '15' above the thirteenth measure, a '6/2' above the fourteenth measure, and a double bar line at the end.

Chi non ha martello

Musical score for 'Chi non ha martello' in bass clef, 4/4 time. The score consists of one staff containing measures 1-5, with a '5' above the fifth measure. The piece ends with a double bar line.

Musical score for the first section of 'Opera nova de balli (bassus)'. It consists of three staves of music in bass clef with a key signature of one flat. The first staff contains measures 1 through 10, with a measure rest indicated by a vertical line and the number 10 above it. The second staff contains measures 11 through 15, with a measure rest indicated by a vertical line and the number 15 above it. The third staff contains measures 16 through 20, with a measure rest indicated by a vertical line and the number 20 above it. A 6/2 time signature change is indicated above the final measure of the third staff.

Incognito

Musical score for the 'Incognito' section. It consists of four staves of music in bass clef with a key signature of one flat. The first staff contains measures 1 through 5, with a measure rest indicated by a vertical line and the number 5 above it. The second staff contains measures 6 through 10, with a measure rest indicated by a vertical line and the number 10 above it. The third staff contains measures 11 through 15, with a measure rest indicated by a vertical line and the number 15 above it. The fourth staff contains measures 16 through 25, with measure rests indicated by vertical lines and the numbers 20 and 25 above them.

Bella foresta

Musical score for the 'Bella foresta' section. It consists of three staves of music in bass clef with a key signature of one flat. The first staff contains measures 1 through 5, with a measure rest indicated by a vertical line and the number 5 above it. The second staff contains measures 6 through 10, with a measure rest indicated by a vertical line and the number 10 above it. The third staff contains measures 11 through 20, with measure rests indicated by vertical lines and the numbers 15 and 20 above them. A 6/2 time signature change is indicated above the final measure of the third staff.

Galante



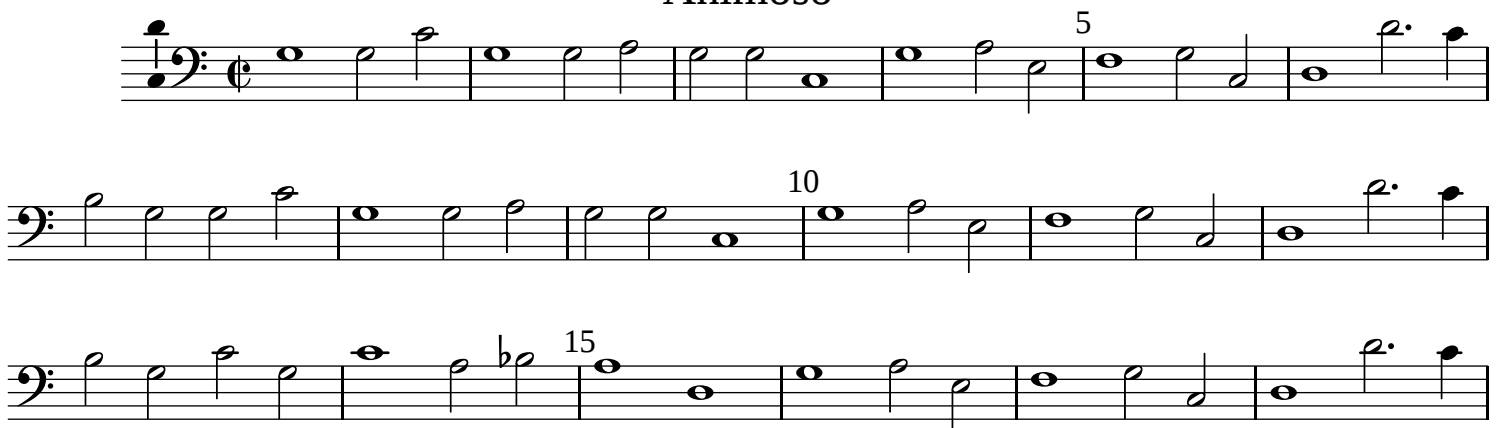
Musical score for Galante, bass clef, common time. The score consists of three staves. The first staff contains measures 1 through 5, with a fermata over the final note of measure 5. The second staff contains measures 6 through 10, with a fermata over the final note of measure 10. The third staff contains measures 11 through 15, with a fermata over the final note of measure 15. A 6/2 time signature change is indicated above measure 14.

Fusta

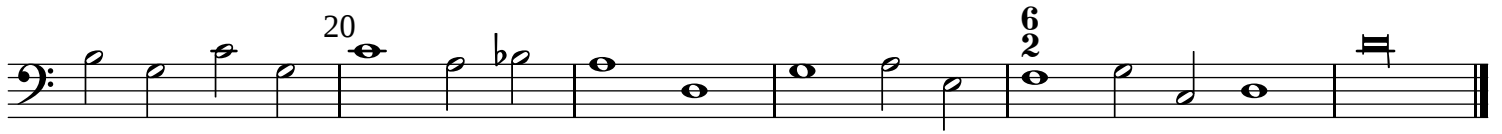


Musical score for Fusta, bass clef, common time. The score consists of three staves. The first staff contains measures 1 through 5, with a fermata over the final note of measure 5. The second staff contains measures 6 through 10, with a fermata over the final note of measure 10. The third staff contains measures 11 through 15, with a fermata over the final note of measure 15. A 6/2 time signature change is indicated above measure 14.

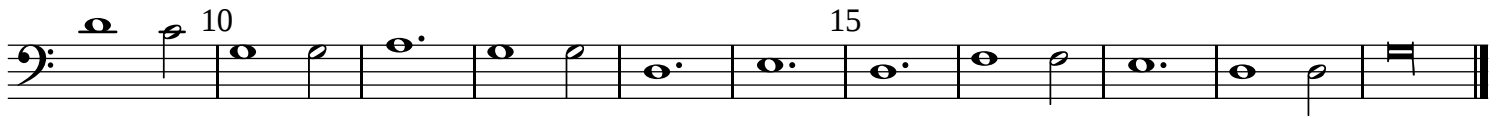
Animoso



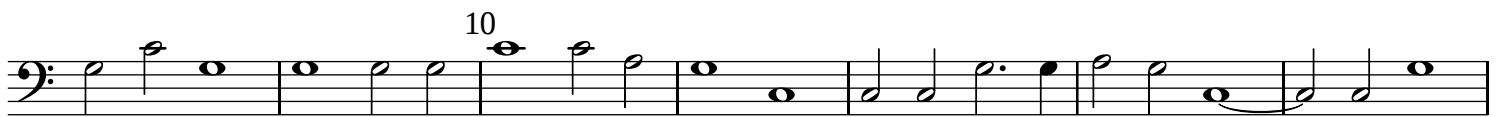
Musical score for Animoso, bass clef, common time. The score consists of three staves. The first staff contains measures 1 through 5, with a fermata over the final note of measure 5. The second staff contains measures 6 through 10, with a fermata over the final note of measure 10. The third staff contains measures 11 through 15, with a fermata over the final note of measure 15. A flat (b) is placed below the note in measure 14.



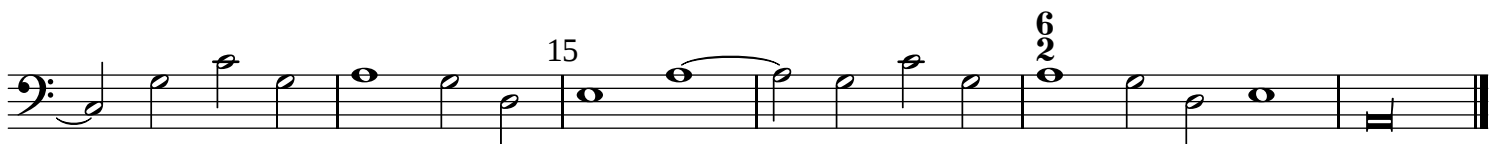
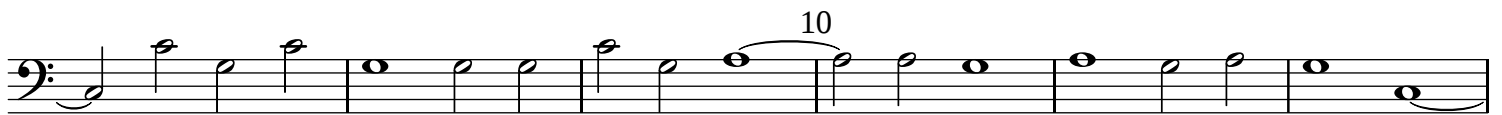
Cortesa padoana



Bandera



Gioia



La giovenetta

Musical score for 'La giovenetta' in bass clef, 2/4 time. The score consists of three staves. The first staff starts with a treble clef and a key signature of one flat (B-flat), then changes to a bass clef. It contains measures 1 through 14, with a measure rest of 5 measures indicated above the staff. The second staff contains measures 15 through 19, with a measure rest of 10 measures indicated above the staff. The third staff contains measures 20 through 24, with a measure rest of 6 measures indicated above the staff. The piece concludes with a double bar line.

Il ben ti vegna

Musical score for 'Il ben ti vegna' in bass clef, 2/4 time. The score consists of five staves. The first staff starts with a treble clef and a key signature of one flat (B-flat), then changes to a bass clef. It contains measures 1 through 9, with a measure rest of 5 measures indicated above the staff. The second staff contains measures 10 through 14, with a measure rest of 10 measures indicated above the staff. The third staff contains measures 15 through 19, with a measure rest of 15 measures indicated above the staff. The fourth staff contains measures 20 through 24, with a measure rest of 20 measures indicated above the staff. The fifth staff contains measures 25 through 29, with a measure rest of 25 measures indicated above the staff. The piece concludes with a double bar line.

Pass'e mezo ditto il compasso

Musical score for 'Pass'e mezo ditto il compasso' in bass clef, 2/4 time. The score consists of three staves. The first staff starts with a treble clef and a key signature of one flat (B-flat), then changes to a bass clef. It contains measures 1 through 4, with a measure rest of 5 measures indicated above the staff. The second staff contains measures 5 through 9, with a measure rest of 10 measures indicated above the staff. The third staff contains measures 10 through 14, with a measure rest of 15 measures indicated above the staff. The piece concludes with a double bar line.

Violla

5

10

6
2