

Francesco Bendusi

Opera nova de balli
à quattro

Edited by Allen Garvin

Tenor
(alto clef)

Hawthorne Early Music
FB-1
20130704

©2013 — Allen Garvin
Some rights reserved

Hawthorne Early Music Publications, Dallas, TX

This work is licensed under the Creative Commons Attribution-ShareAlike 3.0 US License. To view a copy of this license, visit <http://creativecommons.org/licenses/by-sa/3.0/us> or send a letter to Creative Commons, 444 Castro Street, Suite 900, Mountain View, California, 94041, USA.

The typeface used is Liberation Serif, licensed under the GNU General Public License. This document was typeset using XeLaTeX and Lilypond.

10 09 08 07 06 05 04 03 02 01 19 18 17 16 15 14 13

Pass'e mezo ditto il romano

Musical score for 'Pass'e mezo ditto il romano' in 5/4 time. The score consists of two staves. The first staff begins with a treble clef, a key signature of one flat (B-flat), and a common time signature (C). The melody starts on a G4 and features a sequence of eighth and quarter notes. A measure rest is present at the end of the first line. The second staff continues the melody, marked with measure numbers 10 and 15. The piece concludes with a double bar line.

Moschetta

Musical score for 'Moschetta' in 5/4 time. The score consists of four staves. The first staff begins with a treble clef, a key signature of one flat (B-flat), and a common time signature (C). The melody starts on a G4 and features a sequence of eighth and quarter notes. A measure rest is present at the end of the first line. The second staff continues the melody, marked with measure numbers 10 and 15. The third staff continues the melody, marked with measure number 20. The fourth staff concludes the piece, marked with measure number 25, and ends with a double bar line.

Desiderata

Musical score for 'Desiderata' in 5/4 time. The score consists of three staves. The first staff begins with a treble clef, a key signature of one flat (B-flat), and a common time signature (C). The melody starts on a G4 and features a sequence of eighth and quarter notes. A measure rest is present at the end of the first line. The second staff continues the melody, marked with measure numbers 10 and 15. The third staff concludes the piece, marked with measure number 20, and ends with a double bar line.

Pietoso

Musical score for 'Pietoso' in 3/4 time. The score consists of three staves. The first staff is the vocal line, starting with a treble clef and a common time signature. It contains 15 measures, with a measure rest of 5 measures indicated above the staff. The second staff is the bass line, starting with a bass clef and a common time signature. It contains 15 measures, with a measure rest of 10 measures indicated above the staff. The third staff is the bass line, starting with a bass clef and a common time signature. It contains 15 measures, with a measure rest of 6 measures indicated above the staff. The piece concludes with a double bar line.

Speranza

Musical score for 'Speranza' in 3/4 time. The score consists of four staves. The first staff is the vocal line, starting with a treble clef and a common time signature. It contains 15 measures, with a measure rest of 5 measures indicated above the staff. The second staff is the bass line, starting with a bass clef and a common time signature. It contains 15 measures, with a measure rest of 10 measures indicated above the staff. The third staff is the bass line, starting with a bass clef and a common time signature. It contains 15 measures, with a measure rest of 15 measures indicated above the staff. The fourth staff is the bass line, starting with a bass clef and a common time signature. It contains 15 measures, with a measure rest of 20 measures indicated above the staff. The piece concludes with a double bar line.

La mala vecchie

Musical score for 'La mala vecchie' in 3/4 time. The score consists of two staves. The first staff is the vocal line, starting with a treble clef and a common time signature. It contains 15 measures, with a measure rest of 5 measures indicated above the staff. The second staff is the bass line, starting with a bass clef and a common time signature. It contains 15 measures, with a measure rest of 10 measures indicated above the staff. The piece concludes with a double bar line.

Musical notation for the first system of 'Opera nova de balli (tenor)'. It features a single staff in bass clef with a key signature of one flat and a common time signature. The music consists of a sequence of eighth and quarter notes. Measure numbers 15 and 6/2 are indicated above the staff.

Il stocco

Musical notation for the first system of 'Il stocco'. It features a single staff in bass clef with a key signature of one flat and a common time signature. The music consists of a sequence of quarter and eighth notes. A measure number 5 is indicated above the staff.

Musical notation for the second system of 'Il stocco'. It features a single staff in bass clef with a key signature of one flat and a common time signature. The music consists of a sequence of quarter and eighth notes. A measure number 10 is indicated above the staff.

Musical notation for the third system of 'Il stocco'. It features a single staff in bass clef with a key signature of one flat and a common time signature. The music consists of a sequence of quarter and eighth notes. A measure number 15 is indicated above the staff.

Musical notation for the fourth system of 'Il stocco'. It features a single staff in bass clef with a key signature of one flat and a common time signature. The music consists of a sequence of quarter and eighth notes. A measure number 20 is indicated above the staff.

Musical notation for the fifth system of 'Il stocco'. It features a single staff in bass clef with a key signature of one flat and a common time signature. The music consists of a sequence of quarter and eighth notes. Measure numbers 25, 6/2, and 30 are indicated above the staff.

Doi stanchi

Musical notation for the first system of 'Doi stanchi'. It features a single staff in bass clef with a key signature of one flat and a common time signature. The music consists of a sequence of quarter and eighth notes. A measure number 5 is indicated above the staff.

Musical notation for the second system of 'Doi stanchi'. It features a single staff in bass clef with a key signature of one flat and a common time signature. The music consists of a sequence of quarter and eighth notes. A measure number 10 is indicated above the staff.

Musical notation for the third system of 'Doi stanchi'. It features a single staff in bass clef with a key signature of one flat and a common time signature. The music consists of a sequence of quarter and eighth notes. A measure number 15 is indicated above the staff.

Musical notation for the fourth system of 'Doi stanchi'. It features a single staff in bass clef with a key signature of one flat and a common time signature. The music consists of a sequence of quarter and eighth notes. Measure numbers 20 and 6/2 are indicated above the staff.

La falilela

Musical score for 'La falilela' in 3/8 time, featuring a tenor line and a bass line. The score consists of three staves. The first staff (tenor) has a key signature of one flat and a common time signature. The second staff (bass) has a key signature of two flats and a common time signature. The piece ends with a double bar line. Measure numbers 5, 10, and 15 are indicated above the staves. A flat symbol (b) is placed above the final note of the first staff.

La bruna

Musical score for 'La bruna' in 3/8 time, featuring a tenor line and a bass line. The score consists of two staves. The first staff (tenor) has a key signature of one flat and a common time signature. The second staff (bass) has a key signature of two flats and a common time signature. The piece ends with a double bar line. Measure numbers 5, 10, and 15 are indicated above the staves. A flat symbol (b) is placed above the final note of the first staff.

E dove vastu o bon solda

Musical score for 'E dove vastu o bon solda' in 3/8 time, featuring a tenor line and a bass line. The score consists of three staves. The first staff (tenor) has a key signature of one flat and a common time signature. The second staff (bass) has a key signature of two flats and a common time signature. The piece ends with a double bar line. Measure numbers 5, 10, and 15 are indicated above the staves. Flat symbols (b) are placed above the final notes of the first and third staves.

Chi non ha martello

Musical score for 'Chi non ha martello' in 3/8 time, featuring a tenor line. The score consists of one staff. The key signature is one flat and the time signature is common. The piece ends with a double bar line. Measure number 5 is indicated above the staff. A flat symbol (b) is placed above the final note.

Musical score for 'Opera nova de balli (tenor)' in 3/4 time, key of B-flat major. The score consists of three staves. The first staff contains measures 1 through 10, with a measure rest above measure 10. The second staff contains measures 11 through 15. The third staff contains measures 16 through 20, with a measure rest above measure 17.

Incognito

Musical score for 'Incognito' in 3/4 time, key of B-flat major. The score consists of four staves. The first staff contains measures 1 through 5. The second staff contains measures 6 through 10. The third staff contains measures 11 through 15. The fourth staff contains measures 16 through 25, with a measure rest above measure 24.

Bella foresta

Musical score for 'Bella foresta' in 3/4 time, key of B-flat major. The score consists of four staves. The first staff contains measures 1 through 5. The second staff contains measures 6 through 10. The third staff contains measures 11 through 15. The fourth staff contains measures 16 through 20, with a measure rest above measure 17.

Galante

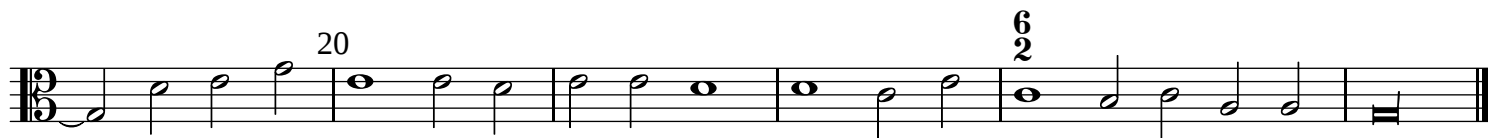
Musical score for 'Galante' in 3/8 time. The score consists of three staves. The first staff is the vocal line, starting with a treble clef and a key signature of one flat (B-flat). It contains 15 measures, with a fermata over the final measure. The second staff is the piano accompaniment, starting with a bass clef and a key signature of one flat. It contains 15 measures, with a fermata over the final measure. The third staff is the piano accompaniment, starting with a bass clef and a key signature of one flat. It contains 15 measures, with a fermata over the final measure. Measure numbers 5, 10, and 15 are indicated above the staves.

Fusta

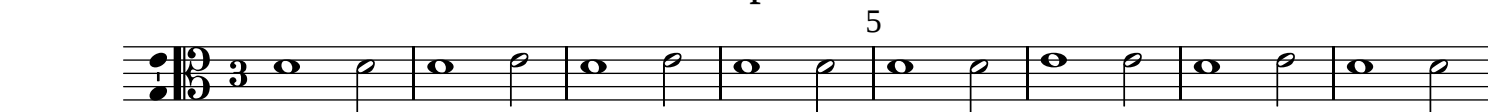
Musical score for 'Fusta' in 3/8 time. The score consists of three staves. The first staff is the vocal line, starting with a treble clef and a key signature of one flat (B-flat). It contains 15 measures, with a fermata over the final measure. The second staff is the piano accompaniment, starting with a bass clef and a key signature of one flat. It contains 15 measures, with a fermata over the final measure. The third staff is the piano accompaniment, starting with a bass clef and a key signature of one flat. It contains 15 measures, with a fermata over the final measure. Measure numbers 5, 10, and 15 are indicated above the staves.

Animoso

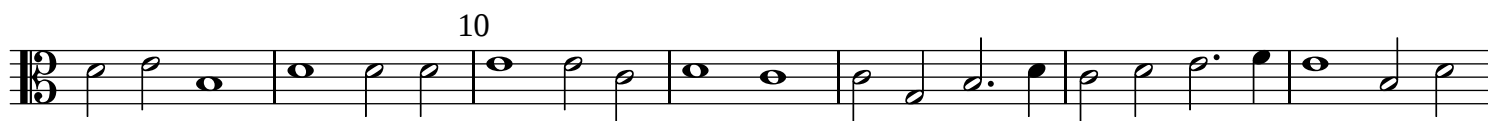
Musical score for 'Animoso' in 3/8 time. The score consists of three staves. The first staff is the vocal line, starting with a treble clef and a key signature of one flat (B-flat). It contains 15 measures, with a fermata over the final measure. The second staff is the piano accompaniment, starting with a bass clef and a key signature of one flat. It contains 15 measures, with a fermata over the final measure. The third staff is the piano accompaniment, starting with a bass clef and a key signature of one flat. It contains 15 measures, with a fermata over the final measure. Measure numbers 5, 10, and 15 are indicated above the staves.



Cortesa padoana



Bandera



Gioia



La giovenetta

Musical score for 'La giovenetta' in G major, 3/4 time. The score consists of four staves. The first staff is the vocal line, starting with a treble clef and a key signature of one flat. The second, third, and fourth staves are accompaniment lines, each starting with a bass clef and a key signature of one flat. Measure numbers 5, 10, 15, and 20 are indicated above the staves. The piece concludes with a double bar line at the end of the fourth staff.

Il ben ti vegna

Musical score for 'Il ben ti vegna' in G major, 3/4 time. The score consists of five staves. The first staff is the vocal line, starting with a treble clef and a key signature of one flat. The second, third, fourth, and fifth staves are accompaniment lines, each starting with a bass clef and a key signature of one flat. Measure numbers 5, 10, 15, 20, and 25 are indicated above the staves. The piece concludes with a double bar line at the end of the fifth staff.

Pass'e mezo ditto il compasso

Musical score for 'Pass'e mezo ditto il compasso' in G major, 3/4 time. The score consists of three staves. The first staff is the vocal line, starting with a treble clef and a key signature of one flat. The second and third staves are accompaniment lines, each starting with a bass clef and a key signature of one flat. Measure numbers 5, 10, and 15 are indicated above the staves. The piece concludes with a double bar line at the end of the third staff.

Violla

5

10

6
2